

ERF4044 , 868MHz antenna, SMA Male connector

Features

Electrical Properties

Parameter:	Description
Frequency Band:	868 MHz , 915 MHz and 2,2 GHz
Nominal Impedance:	50 Ω
Polarization:	Vertical
V.S.W.R.	2.0:1

Mechanical Properties

Parameter:	Description
Antenna Type:	External Antenna
Mounting Method:	Screw Type
Connector Type:	SMA (Male)
Antenna Dimensions:	207 mm ±2
Antenna Color:	Black
Operating Temperature Range:	-20°C~+60°C
Storage Temperature Range:	-30°C~+70°C



Typical applications

- M2M applications
- IoT
- ISM band applications
- LoRa
- M-Bus
- SigFox

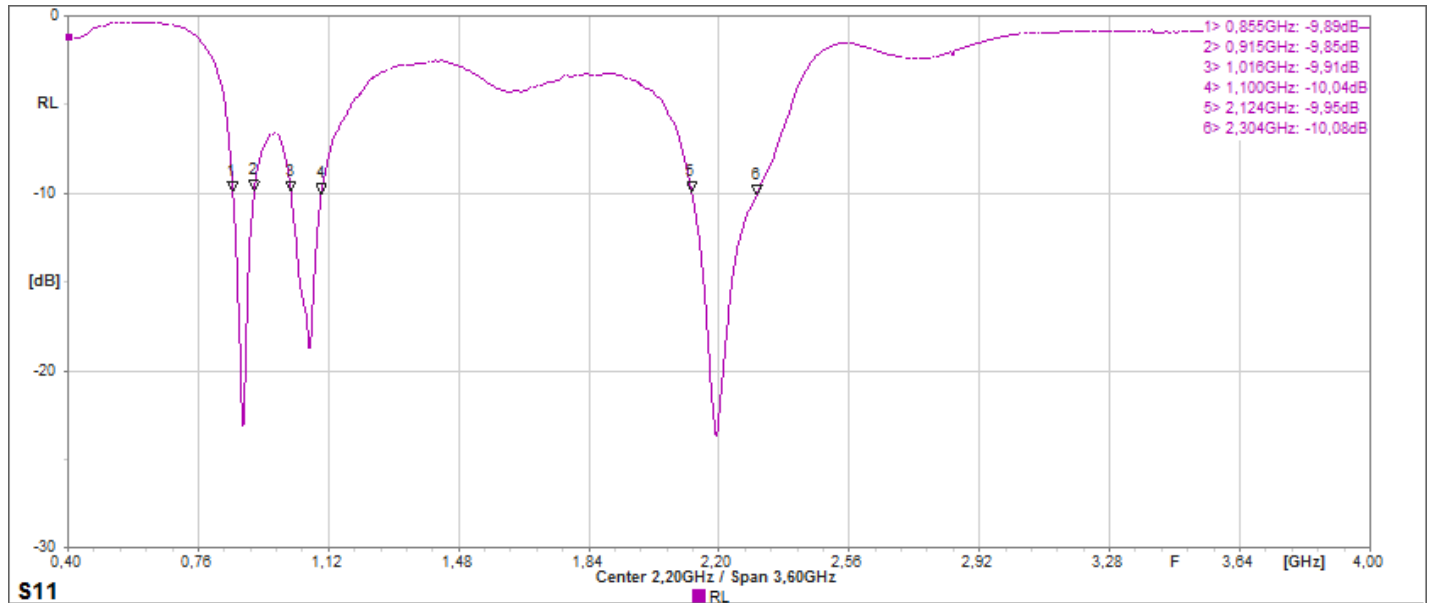
Description

The ERF4044 Antenna is a black 868 MHz antenna with a hinged design and a SMA (Male) connector. The hinged design enables the antenna to be positioned at its most suitable angle with a maximum of 90°. The antenna can be used for applications such as, M2M applications, IoT , ISM , LoRa, M-Bus and SigFox.

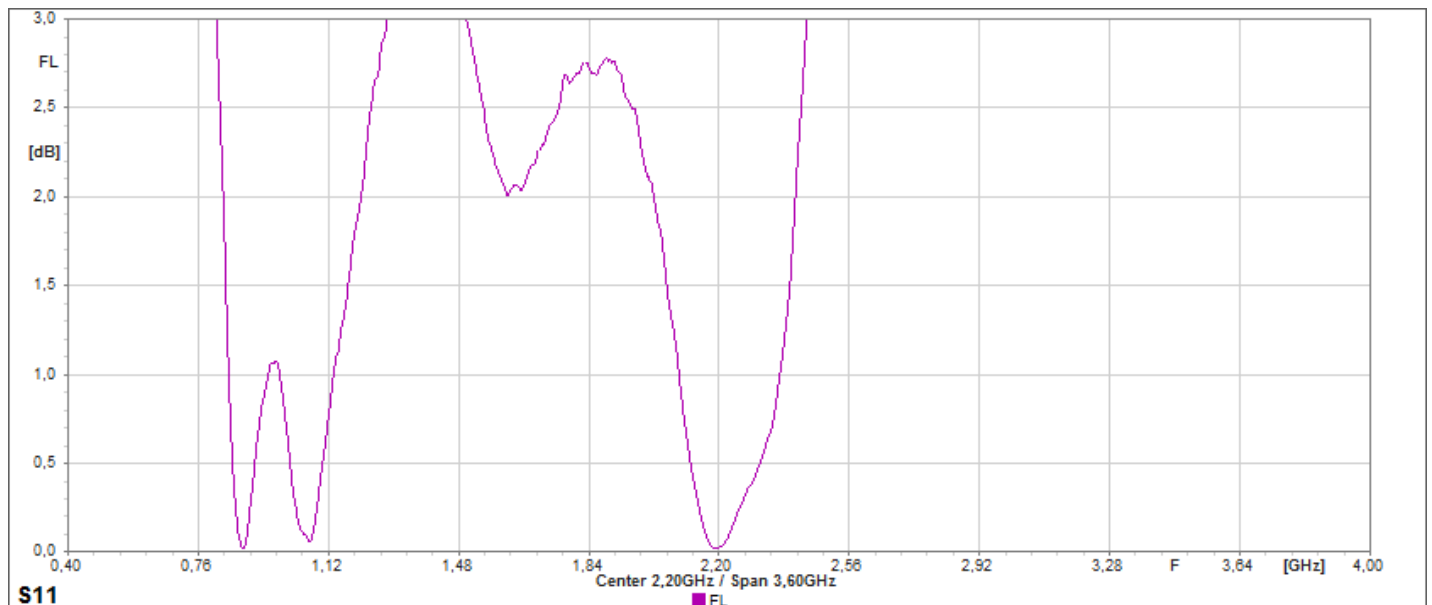
ERF4044 , 868MHz antenna, SMA Male connector

Antenna Properties

Return Loss

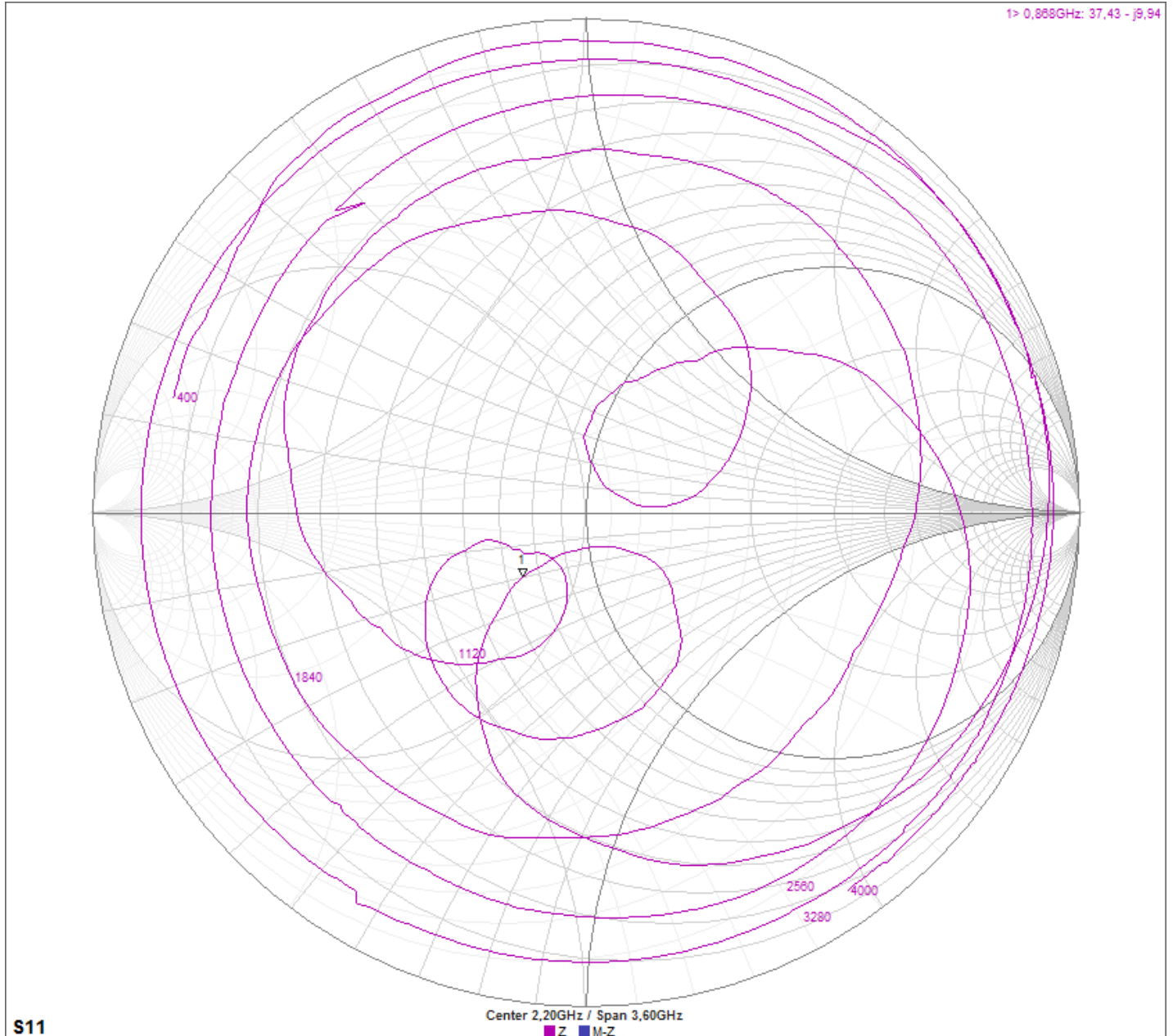


Forward Loss



ERF4044 , 868MHz antenna, SMA Male connector

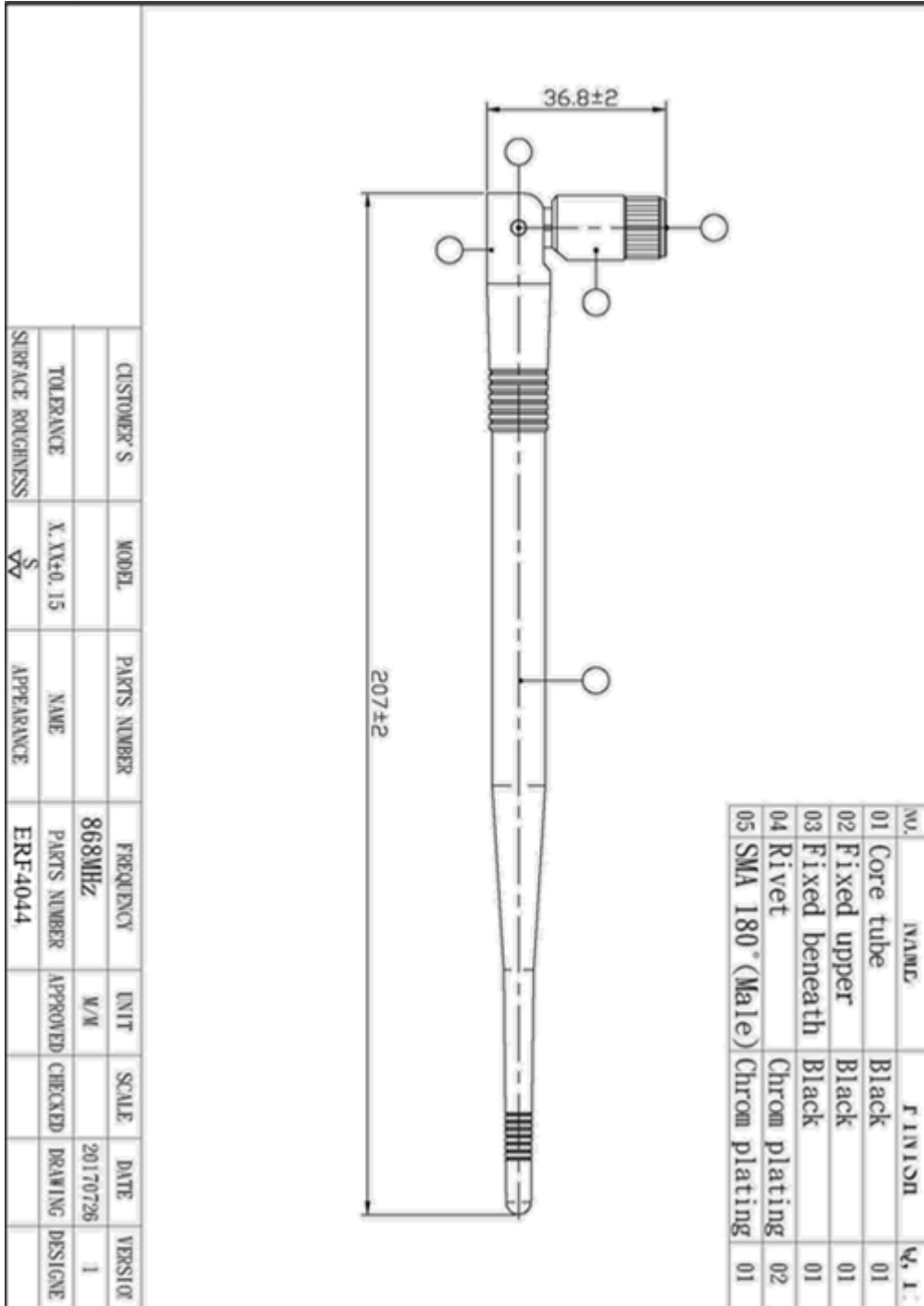
Impedance





ERF4044 , 868MHz antenna, SMA Male connector

Dimensions



ERF4044 , 868MHz antenna, SMA Male connector

Connector

The ERF4044 antenna uses the SMA Male connector.

Ordering information

Ordering can be done via www.summit-electronics.com or via info@summit-electronics.com. Please contact us for more information. Customisation of the product is available on request.

Technical support

For all product questions please contact us via info@summit-electronics.com